

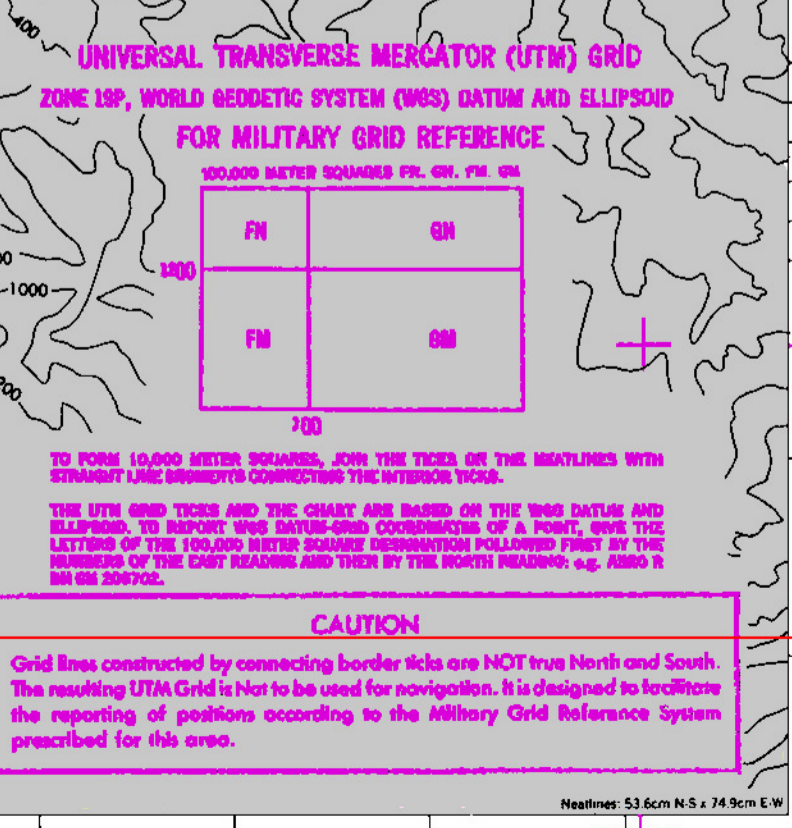
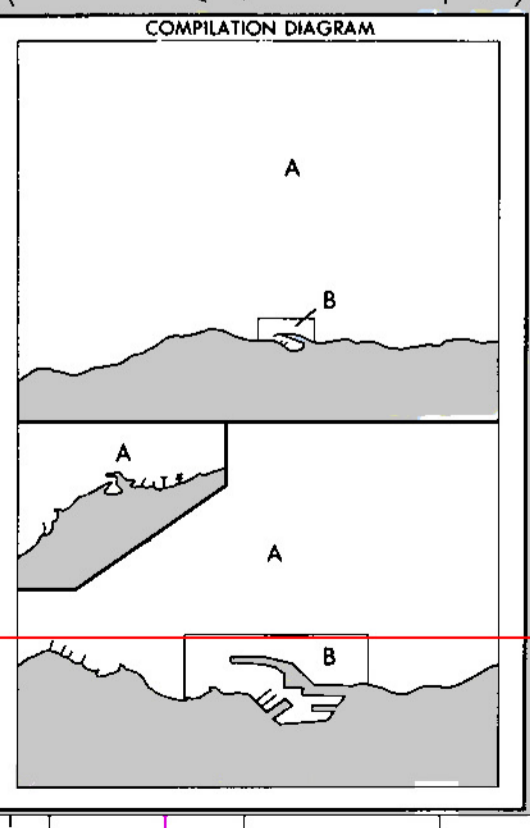
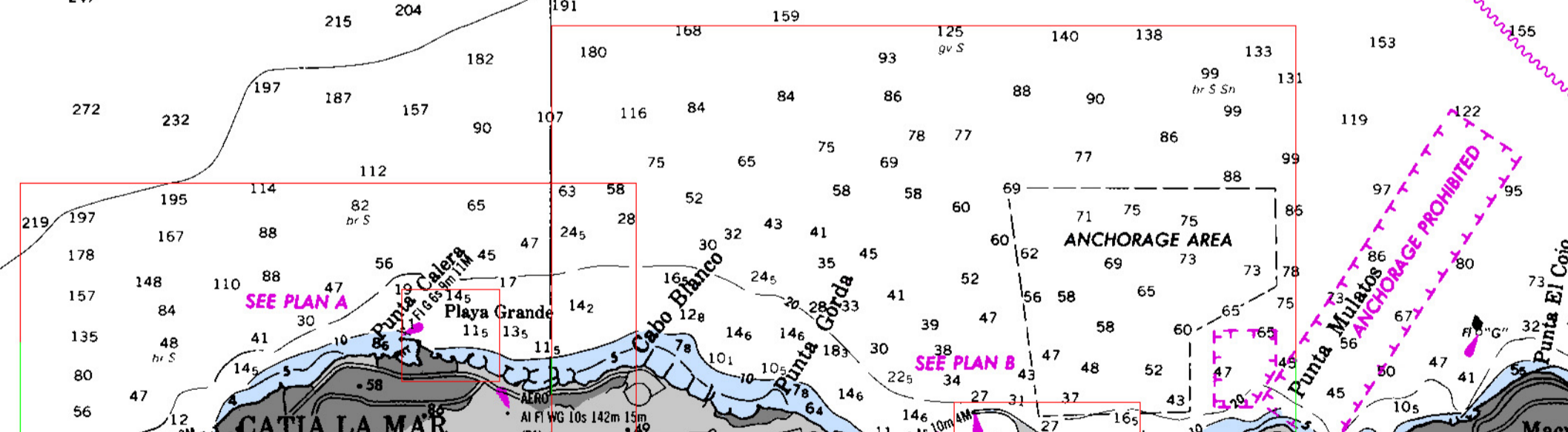
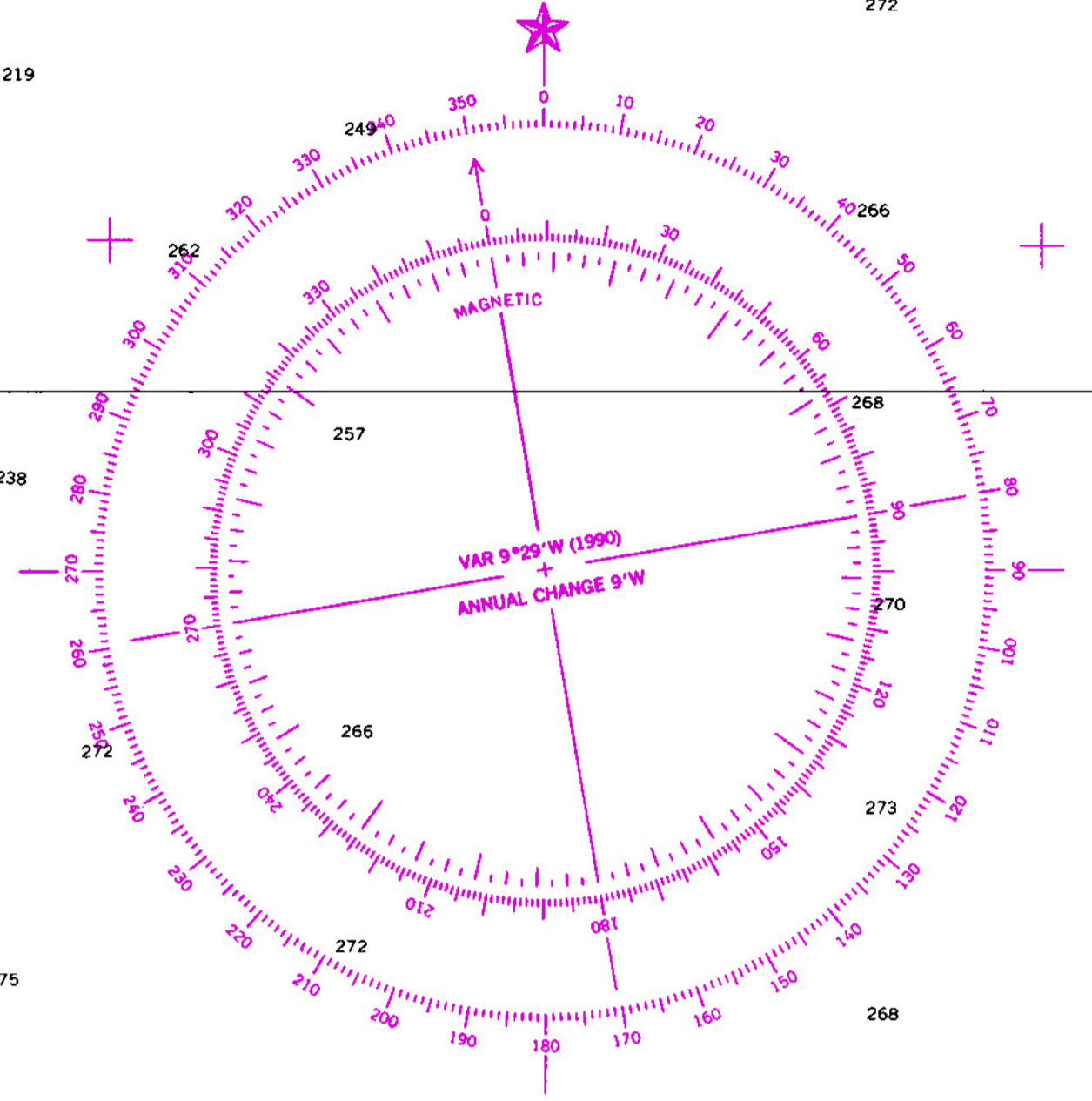
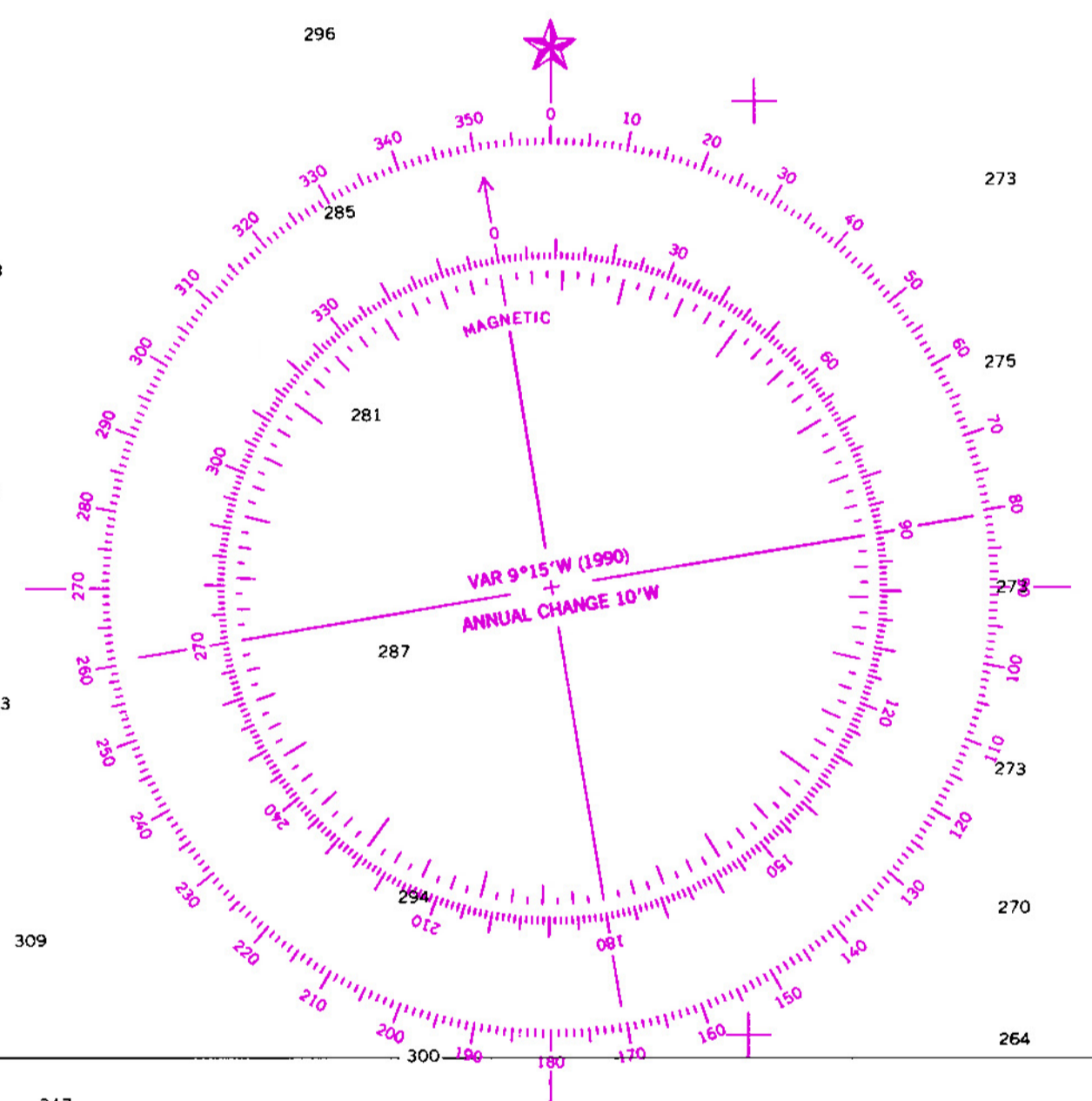
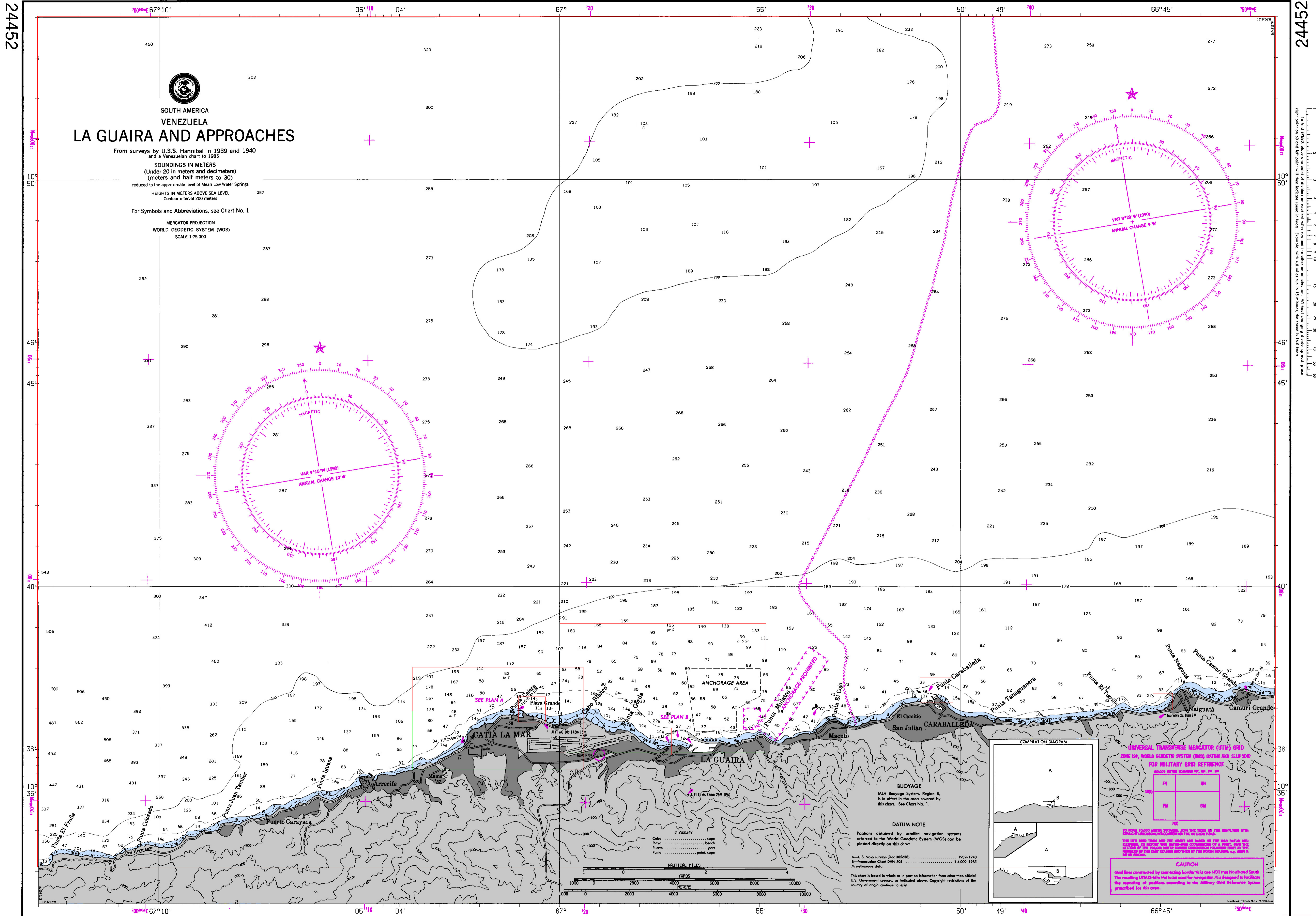


SOUTH AMERICA VENEZUELA LA GUAIRA AND APPROACHES

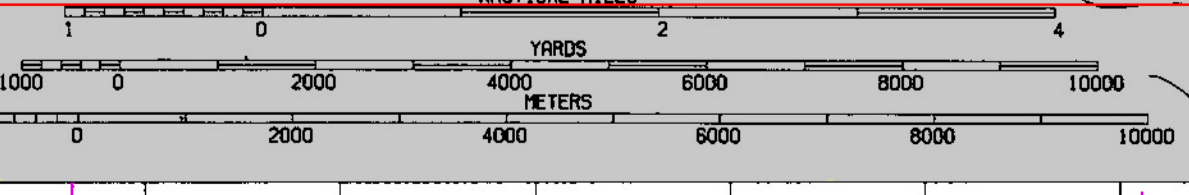
From surveys by U.S.S. Hannibal in 1939 and 1940
and a Venezuelan chart to 1985
SOUNDINGS IN METERS
(Under 20 in meters and decimeters)
(meters and half meters to 30)
reduced to the approximate level of Mean Low Water Springs
HEIGHTS IN METERS ABOVE SEA LEVEL
Contour interval 200 meters

For Symbols and Abbreviations, see Chart No. 1

MERCATOR PROJECTION
WORLD GEODETIC SYSTEM (WGS)
SCALE 1:75,000



DATUM NOTE
Positions obtained by satellite navigation systems referred to the World Geodetic System (WGS) can be plotted directly on this chart.
A—U.S. Navy surveys (Dec 30543B) 1939-1940
B—Venezuelan Chart OFN 308 14,000, 1985
Miscellaneous data



LOGARITHMIC SPEED SCALE
To find SPEED, place one point of divider on number in line and the other on minutes, run, without changing divider spread, place right point on 60 and left point will then indicate speed in knots. Example: with 4.0 minutes run in 15 minutes, the speed is 16.0 knots.